

ARCHITECTONIC SOLUTION OF MAKING ACCESSIBLE TERTIARY EDUCATION FOR DISABLED, CAMPUS CTU IN PRAGUE – DEJVICE

Presentation : Ing. arch. Jana Zezulová

ULD 2013, BRNO



content of the presentation

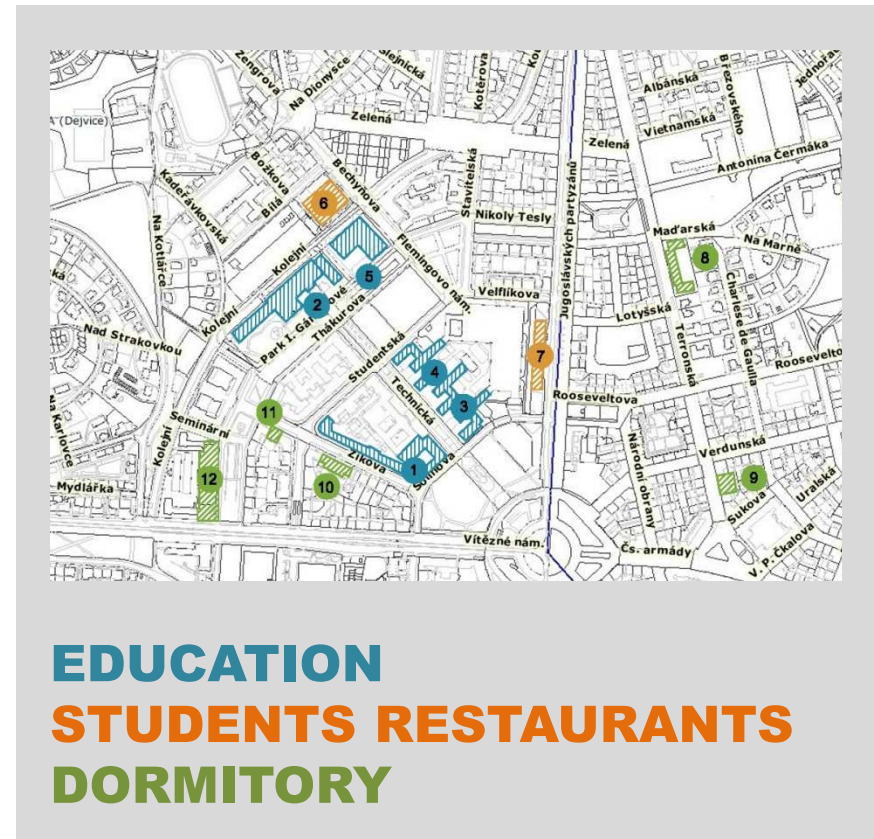
- 1. introduction**
- 2. analysis of data on students**
- 3. case study - campus Praha - Dejvice**
- 4. summary**



introduction

CIPS CTU
handicap advisory centre
Mgr. Barbora Čalkovská

CASE STUDY –
university campus CTU
Praha - Dejvice



ULD 2013, BRNO

introduction

- **Analysis of the current situation of students with special needs in higher education by the Ministry of Education, Youth and Sports, 2010;**
- **Public Notice Nb.398/2009 general technical requirements ensuring barrier-free use of buildings;**
- **Supplement No.2 to the „Rules for allowance and subsidies to public universities by the Ministry of Education, Youth and Sports, 28.january 2011;**
- **Methodical instruction about support for students with special needs,CTU, 2007,2012;**



analysis of data

	CTU	CAMPUS PRAHA - DEJVICE
STUDENTS WITH DISABILITY	80	48
ENVIROMENT ADJUSTED ACCORDING THE PUBLIC NOTICE NO.398/2009	26	5

1 student with hearing impairment
4 students with movement disability



analysis of data

OBJECT/FACULTY	DISABILITY			
	HEARING IMPAIRMENT		MOVEMENT DISABILITY	
	USER VERBAL LANGUAGE	USER OF SIGN LANGUAGE	DISABILITY OF LOWER LIMBS	DISABILITY OF UPPER LIMBS
FACULTY OF MECHANICAL ENGINEERING	1	x	1	1
FACULTY OF ARCHITECTURE AND FACULTY OF INFORMATION TECHNOLOGY	x	x	1	1



case study

3 parts

mapping the current state of the campus CTU Praha – Dejvice in terms of accessibility for persons with disabilities

building adjustments in accordance with the [Public Notice No.398/2009](#)

adjustments based on the **client requirements** information and advice Service Centre



case study

PART 1 - mapping the current state of the campus CTU – Dejvice in terms of accessibility for persons with disabilities

ENTRY	DURING RECONSTRUCTION AROSE 15 CM HIGH STAIR STEP TO THE OBJECT.
ACCESSIBILITY BUILDING THE MOVEMENT	IN THE ENTRANCE HALL THERE ARE 3 STEPS. FOR THEIR OVERCOMING IS USED WOODEN MOBILE RAMP.
BARRIER FREE TOILETS	AVAILABLE IN MONOBLOCK OF FACULTY OF ELECTRICAL ENGINEERING.
NOTE	DUE TO INTERCONNECTION MONOBLOCK WITH FACULTY OF ELECTRICAL ENGINEERING, IT ALLOWS WHEELCHAIR MOVEMENT AND ACCESS TO BARRIER FREE TOILETS.



case study



detail the step at the entrance to the building



reference to the disabled toilets at the Faculty of Electrical Engineering



ramp in the entrance hall

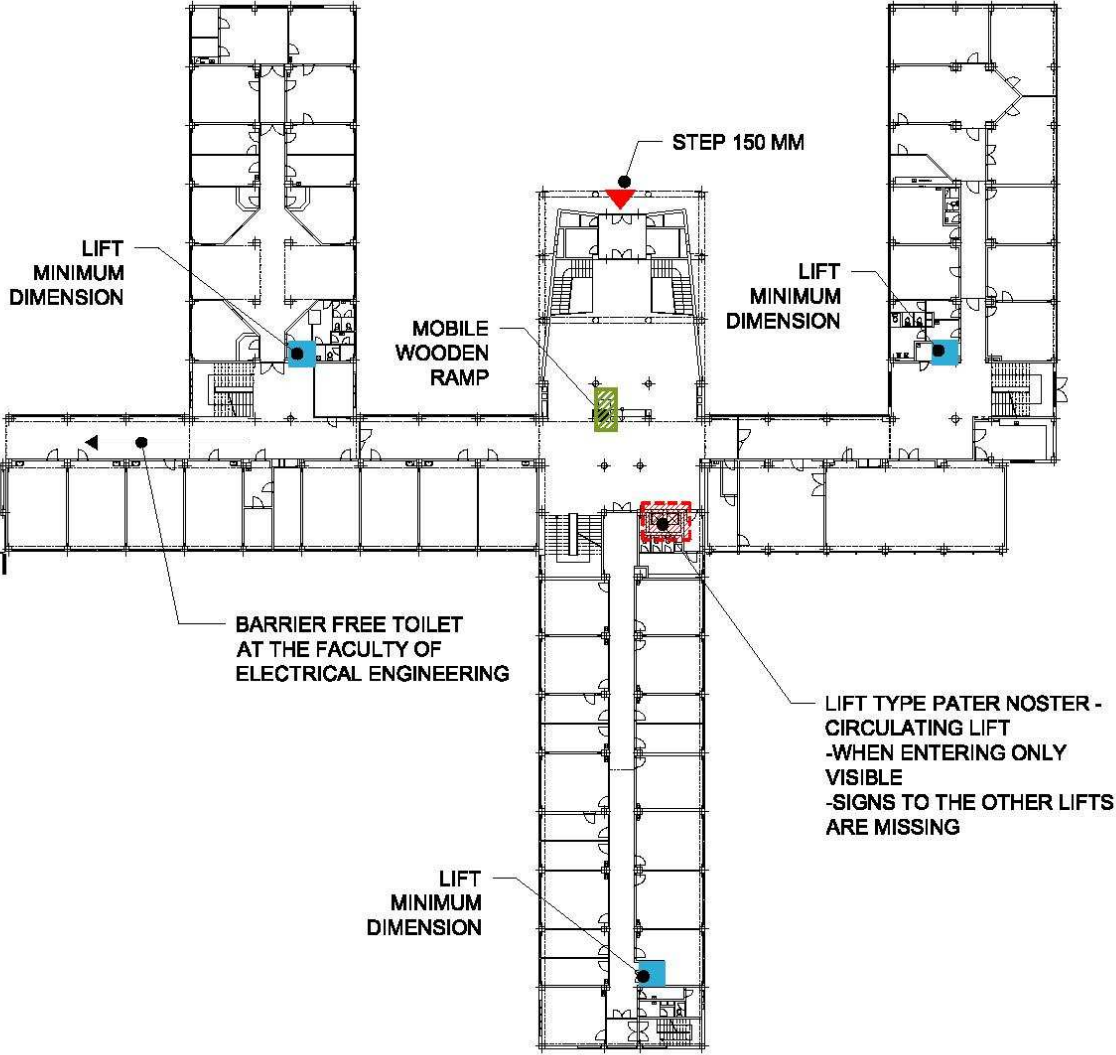


case study

GROUND PLAN

LEGENDA

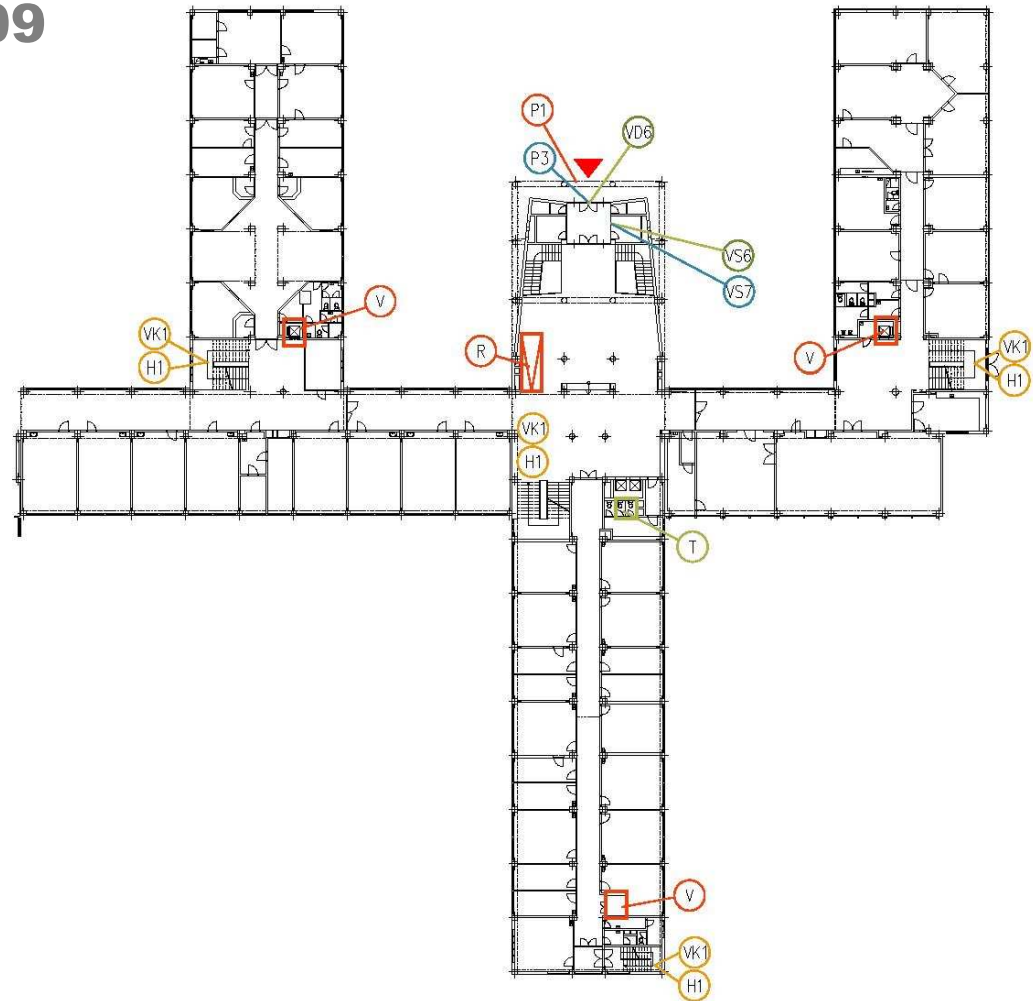
-  ENTRY
-  ACCESSIBLE FOR PEOPLE WITH LIMITED MOBILITY
-  BARRIER
-  LIFT
-  BARRIER FREE TOILET



case study

PART 2 - Building adjustments in accordance with the Public Notice No.398/2009

GROUND PLAN



LEGEND

- ADAPTATIONS FOR PEOPLE WITH LIMITED MOBILITY
- ADAPTATIONS FOR PEOPLE WITH HEARING IMPAIRMENT
- ADAPTATIONS FOR VISUALLY IMPAIRED PEOPLE
- ADAPTATIONS FOR 2 OR MORE DISABILITY



ULD 2013, BRNO

case study

PART 3 - adjustments based on the clients ´ requirements information and advice Service Centre

induction loop

Student with hearing impairment studying at the Faculty of Mechanical Engineering was granted handicap advisory at the level of special education :

- **provision of study materials in electronic form;**
- **hire and train the work on assistive technologies;**
- **training of spatial orientation;**
- **mediation with teachers on adjustments mode (extended time, writing tests on the premises of the support center where they are needed assistive technology center, etc.);**



summary

conclusions case study

These adjustments make accessible campus buildings to persons with disabilities, globally. Present students with disabilities studying in CTU campus in Dejvice did not demand any removal of physical barriers.

It shows that the current state is for the current students barrier free :

- **since objects are sufficiently accessible regardless of the Public Notice;**
- **because of character and needs of their disability these adjustments do not need;**



use

In autumn 2012, began project **BARRIER FREE CTU**
in the centre ELSA

Goals of the project :

- **informations about accessibility objects CTU for people with disabilities;**
- **materials for the removal of barriers;**
- **internal consultation of projects under the CTU;**
- **data for cooperation with external companies, grants;**



conclusion

Interaction between making **accessible higher education and its environment for people with disabilities.**



Thank you for your attention



SUPPORT CENTRE STUDENTS WITH SPECIAL NEEDS **ELSA**

BECHYŇOVA 3, PRAHA 6 - DEJVICE

E-mail: stredisko@elsa.cvut.cz

Web: www.elsa.cvut.cz